

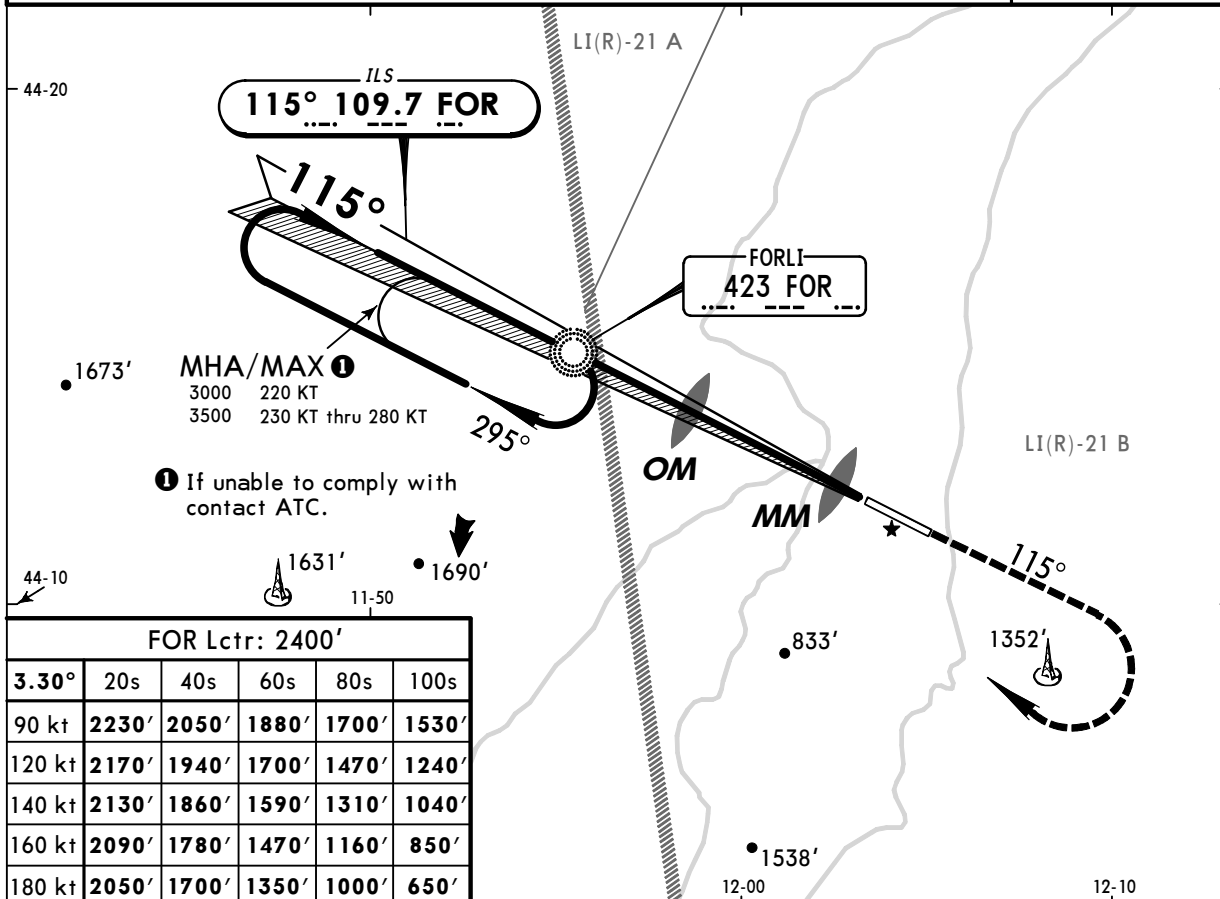
LIPK/FRL
FORLI

JEPPESEN
24 JUL 09 **(11-1)** Eff 30 Jul

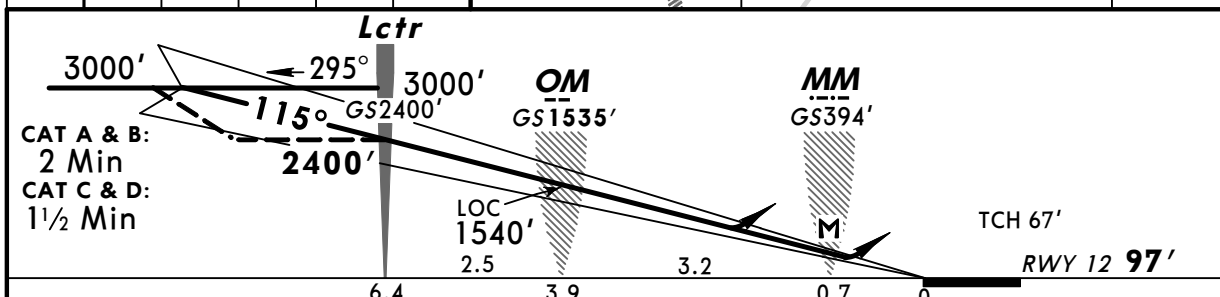
FORLI, ITALY
ILS Z Rwy 12

BRIEFING STRIP™

ROMAGNA Approach (R)				*FORLI Tower	
118.15		118.57		122.1	
119.75		118.95			
For UHF see MIL-101 listing					
LOC FOR 109.7	Final Apch Crs 115°	GS OM 1535' (1438')	ILS DA(H) Refer to Minimums	Apt Elev 97'	97'
MISSED APCH: Climb on track 115° to 3000'. Passing 1700' turn RIGHT (MAX 200 KT) to Lctr and join holding pattern.					<p>MSA FOR Lctr</p>
Alt Set: hPa Rwy Elev: 4 hPa Trans level: By ATC Trans alt: 6000'					
1. FOR Lctr required. 2. Racetrack pattern is restricted to MAX 220 KT.					



FOR Lctr: 2400'					
3.30°	20s	40s	60s	80s	100s
90 kt	2230'	2050'	1880'	1700'	1530'
120 kt	2170'	1940'	1700'	1470'	1240'
140 kt	2130'	1860'	1590'	1310'	1040'
160 kt	2090'	1780'	1470'	1160'	850'
180 kt	2050'	1700'	1350'	1000'	650'



Gnd speed-Kts	70	90	100	120	140	160	
ILS GS or LOC Descent angle 3.30°	414	532	591	710	828	946	
MAP at MM							

STRAIGHT-IN LANDING RWY 12				CIRCLE-TO-LAND	
ILS DA(H) A: 350' (253') C: 370' (273') B: 362' (265') D: 381' (284')		LOC (GS out) DA(H) 540' (443')		Southwest of rwy (Northeast of runway under ATC clearance)	
FULL/Limited	ALS out	ALS out	ALS out	Max Kts	MDA(H) VIS
A	RVR 800m	RVR 1300m	RVR 1500m	100	980' (883') 1500m
B	RVR 900m			135	980' (883') 1600m
C	RVR 900m	RVR 1700m	CMV 2100m	180	1760' (1663') 2400m
D	RVR 1400m			205	1760' (1663') 3600m

PANS OPS 4