

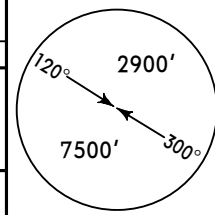
LIPK/FRL
FORLI

JEPPESEN
24 JUL 09 (13-1) Eff 30 Jul

FORLI, ITALY
VOR Rwy 12

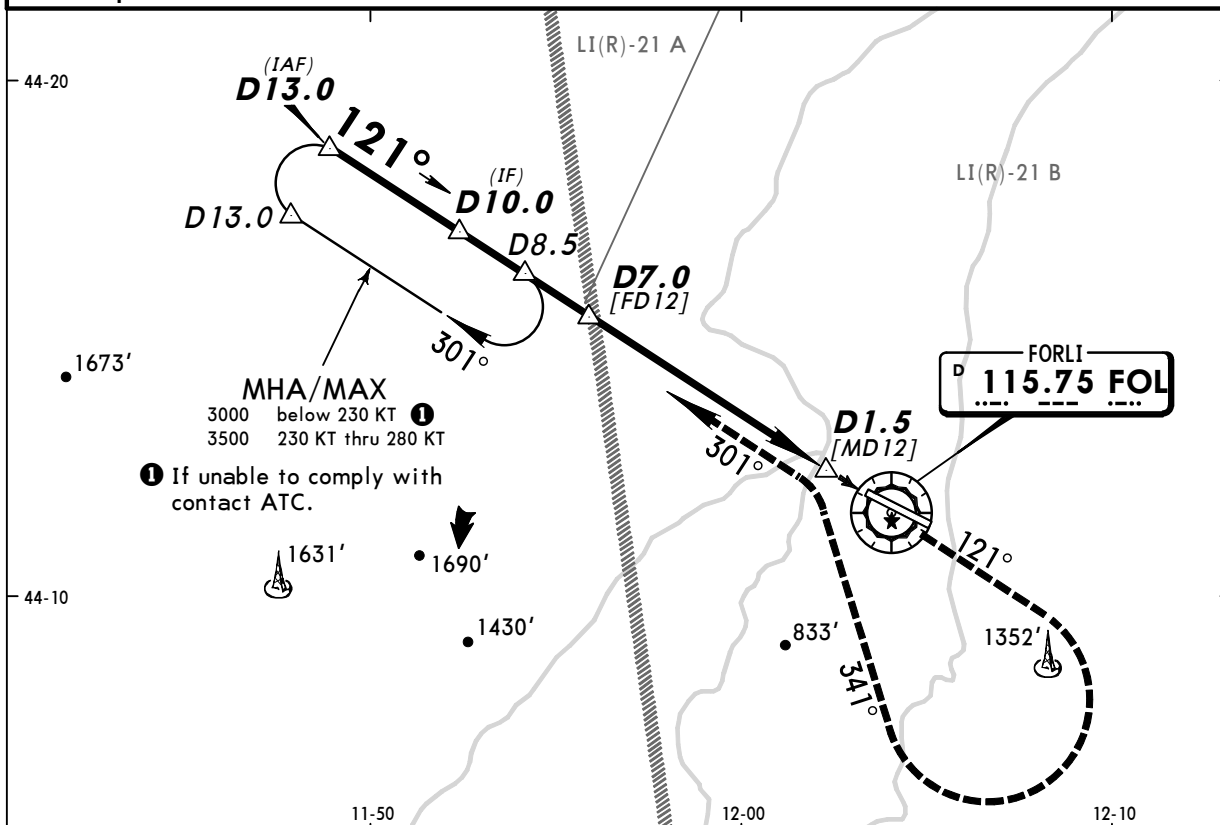
BRIEFING STRIP™

| | | | | |
|--|-------------------|---------------------|--------------|--------------|
| ROMAGNA Approach (R) | | | *FORLI Tower | |
| 118.15 | 118.57 | 122.1 | 119.75 | 118.95 |
| For UHF see MIL-101 listing | | | | |
| VOR FOL | Final Apch Crs | Minimum Alt D7.0 | DA(H) | Apt Elev 97' |
| 115.75 | 121° | 2200' (2103') | 750' (653') | RWY 97' |
| MISSED APCH: Climb on track 121° to 3000'. Passing 1700' turn RIGHT (MAX 200 KT) onto track 341° to intercept and follow R-301 to holding. | | | | |
| MSA FOL VOR | | | | |

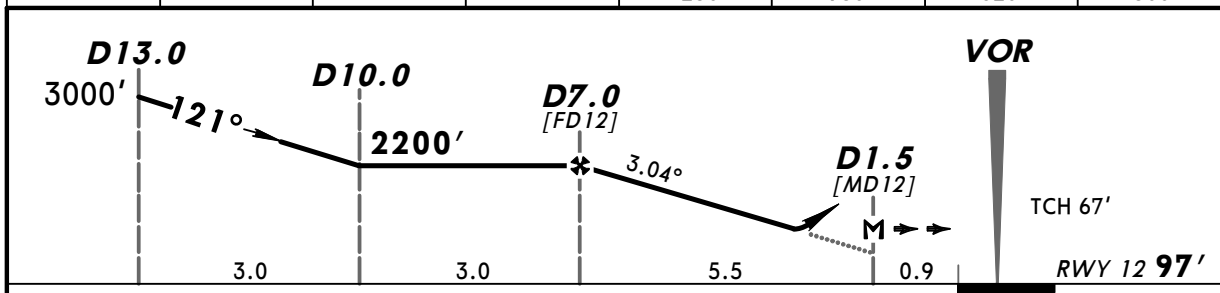


Alt Set: hPa Rwy Elev: 4 hPa Trans level: By ATC Trans alt: 6000'

DME required.



| | | | | | | | |
|----------|-------|-------|-------|-------|------|------|------|
| FOL DME | 7.0 | 6.0 | 5.0 | 4.0 | 3.0 | 2.0 | 1.0 |
| ALTITUDE | 2200' | 1880' | 1570' | 1250' | 930' | 620' | 300' |



| | | | | | | | |
|---------------------|-----|-----|-----|-----|-----|-----|-------------------------------------|
| Gnd speed-Kts | 70 | 90 | 100 | 120 | 140 | 160 | HIALS PAPI PAPI 1700' on 121° |
| Descent angle 3.04° | 376 | 484 | 538 | 645 | 753 | 861 | |
| MAP at D1.5 | | | | | | | |

| | | | | | |
|------------|--|-----------|--|-------------|-------|
| PANS OPS 4 | Standard STRAIGHT-IN LANDING RWY 12 | | CIRCLE-TO-LAND Southwest of rwy (Northeast of runway under ATC clearance) | | |
| | DA(H) 750' (653') | | | | |
| | ALS out | | Max Kts | MDA(H) | VIS |
| | A | RVR 1500m | 100 | 980' (883') | 1500m |
| | B | | 135 | 980' (883') | 1600m |
| C | CMV 2600m | 180 | 1760' (1663') | 3000m | |
| D | CMV 3000m | 205 | 1760' (1663') | 3600m | |