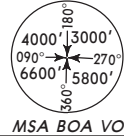
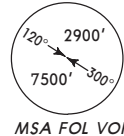


LIPK / FRL
FORLI

JEPPesen
11 NOV 11 **(11-2)**

FORLI, ITALY
ILS Y Rwy 12

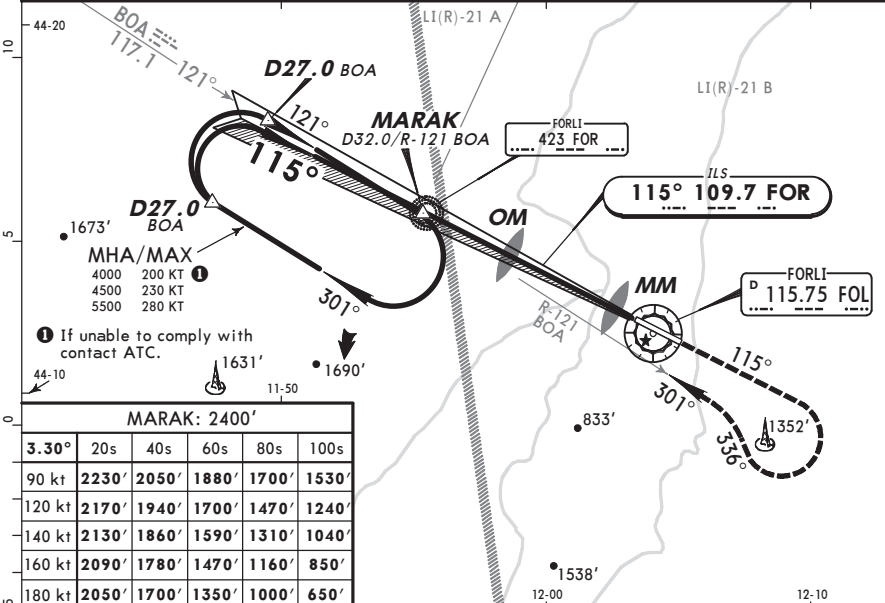
ROMAGNA Approach (R)			*FORLI Tower	
118.15	118.57	122.1	119.75	118.95
For UHF see MIL-101 listing				
LOC FOR	Final Apch Crs	GS OM	ILS DA(H) Refer to Minimums	Apt Elev 97'
109.7	115°	1535' (1438')		RWY 97'



MISSED APCH: Climb on track 115° to 4000'. Crossing 1700' turn RIGHT (MAX 200 KT) onto track 336°, intercept and follow R-121 inbound BOA VOR climbing to 4000' to MARAK.
Partially outside controlled airspace.

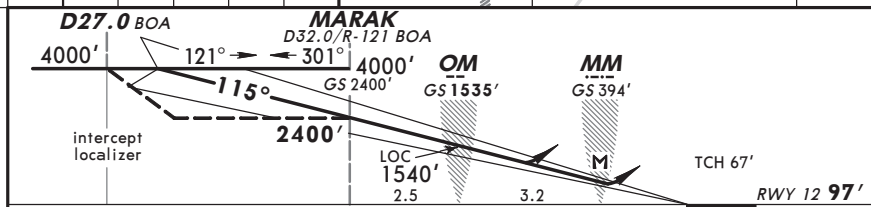
Alt Set: hPa Rwy Elev: 4 hPa Trans level: By ATC Trans alt: 6000'

1. **BOA VOR DME required.** 2. **WARNING:** Inbounds only via BOA VOR - MARAK at published MEA. 3. Race-track pattern is restricted to MAX 200 KT.



MARAK: 2400'

3.30°	20s	40s	60s	80s	100s
90 kt	2230'	2050'	1880'	1700'	1530'
120 kt	2170'	1940'	1700'	1470'	1240'
140 kt	2130'	1860'	1590'	1310'	1040'
160 kt	2090'	1780'	1470'	1160'	850'
180 kt	2050'	1700'	1350'	1000'	650'



Gnd speed-Kts	70	90	100	120	140	160	HIALS PAPI PAPI 1700' on 115°
ILS GS or LOC Descent angle 3.30°	414	532	591	710	828	946	
MAP at MM							

Standard		STRAIGHT-IN LANDING RWY 12		CIRCLE-TO-LAND	
ILS		LOC (GS out)		Southwest of rwy (Northeast of runway under ATC clearance)	
DA(H) A: 350' (253') B: 362' (265') C: 370' (273') D: 381' (284')		DA(H) 540' (443')			
FULL/Limited		ALS out		Max Kts	
A	RVR 800m	RVR 1500m		100	980' (883') 1500m
B		RVR 1500m		135	980' (883') 1600m
C	RVR 900m	RVR 1700m		180	1760' (1663') 2400m
D		CMV 2100m		205	1760' (1663') 3600m

CHANGES: Missed apch.