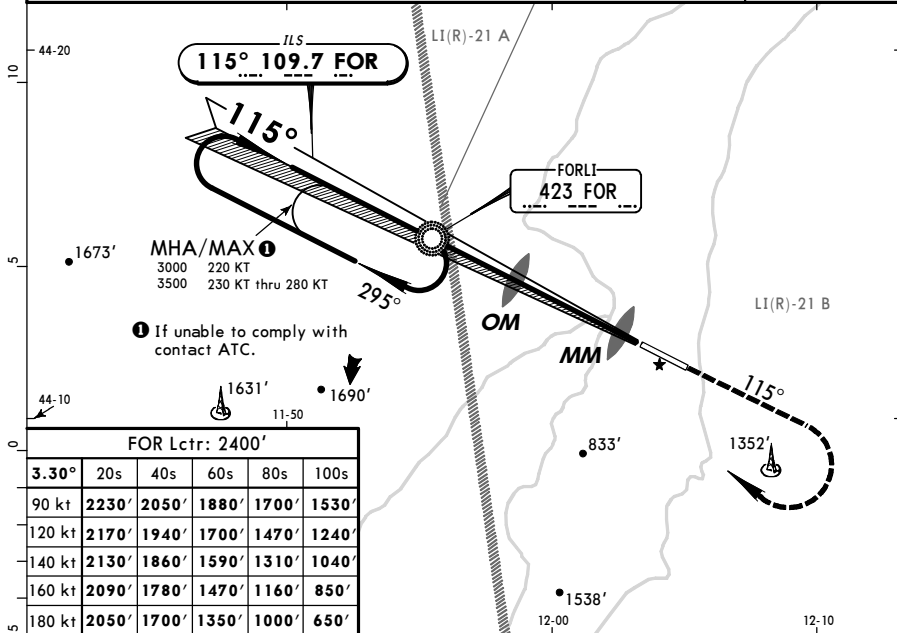


LIPK/FRL
FORLI

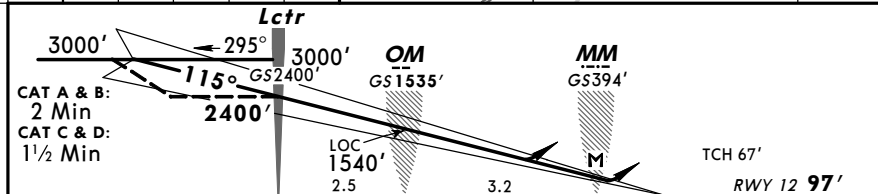
JEPPesen
11 NOV 11 (11-1)

FORLI, ITALY
ILS Z Rwy 12

ROMAGNA Approach (R)				*FORLI Tower	
118.15 118.57 122.1			119.75 118.95		
For UHF see MIL-101 listing					
LOC FOR 109.7	Final Apch Crs 115°	GS OM 1535' (1438')	ILS DA(H) Refer to Minimums	Apt Elev 97'	RWY 97'
MISSED APCH: Climb on track 115° to 3000'. Passing 1700' turn RIGHT (MAX 200 KT) to Lctr and join holding pattern. Partially outside controlled airspace.					
Alt Set: hPa Rwy Elev: 4 hPa Trans level: By ATC Trans alt: 6000' 1. FOR Lctr required. 2. Racetrack pattern is restricted to MAX 220 KT.					MSA FOR Lctr



FOR Lctr: 2400'						
	3.30°	20s	40s	60s	80s	100s
90 kt	2230'	2050'	1880'	1700'	1530'	
120 kt	2170'	1940'	1700'	1470'	1240'	
140 kt	2130'	1860'	1590'	1310'	1040'	
160 kt	2090'	1780'	1470'	1160'	850'	
180 kt	2050'	1700'	1350'	1000'	650'	



Gnd speed-Kts	70	90	100	120	140	160			
ILS GS or LOC Descent angle 3.30°	414	532	591	710	828	946			
MAP at MM									

STRAIGHT-IN LANDING RWY 12				CIRCLE-TO-LAND	
ILS		LOC (GS out)		Southwest of rwy (Northeast of runway under ATC clearance)	
DA(H) A: 350' (253') C: 370' (273') B: 362' (265') D: 381' (284')		DA(H) 540' (443')			
FULL/Limited		ALS out		Max Kts. MDA (H) VIS	
A	RVR 800m	RVR 1500m		100	980' (883') 1500m
B		RVR 1500m		135	980' (883') 1600m
C	RVR 900m	RVR 1700m		180	1760' (1663') 2400m
D		RVR 1700m CMV 2100m		205	1760' (1663') 3600m