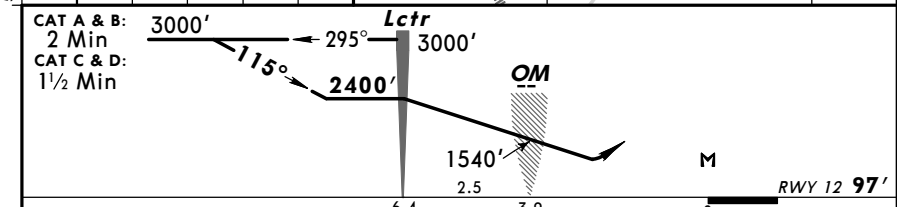
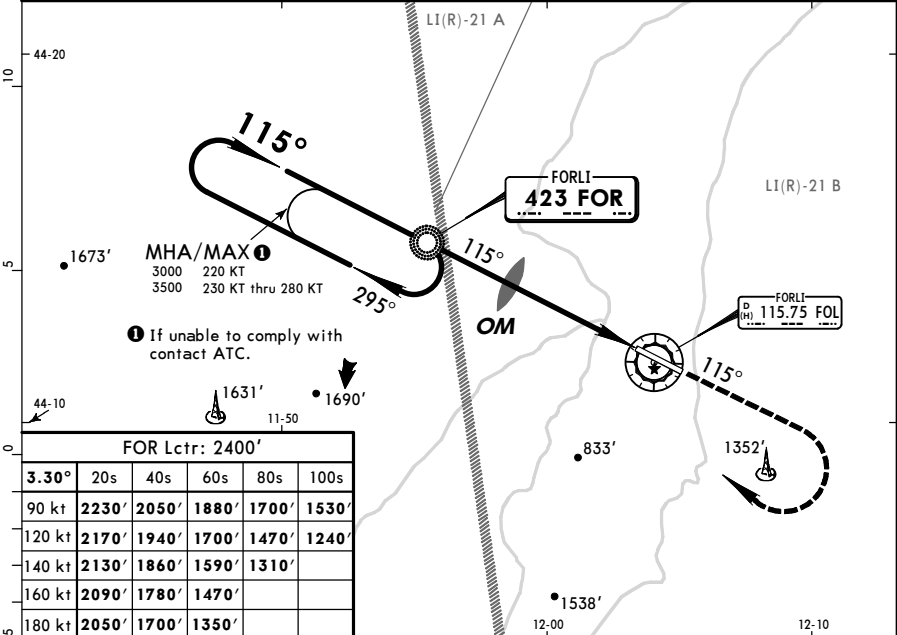


LIPK/FRL
FORLI

JEPPesen
11 NOV 11 **(16-1)** **Eff 17 Nov**

FORLI, ITALY
Lctr Rwy 12

ROMAGNA Approach (R)			*FORLI Tower	
118.15	118.57	122.1	119.75	118.95
For UHF see MIL-101 listing				
Lctr FOR 423	Final Apch Crs 115°	Minimum Alt Lctr 2400' (2303')	DA(H) 1170' (1073')	Apt Elev 97' RWY 97'
MISSED APCH: Climb on track 115° to 3000'. Passing 1700' turn RIGHT (MAX 200 KT) to Lctr and join holding pattern. Partially outside controlled airspace.				
Alt Set: hPa		Rwy Elev: 4 hPa	Trans level: By ATC	Trans alt: 6000'
Racetrack pattern is restricted to MAX 220 KT.				



Gnd speed-Kts	70	90	100	120	140	160	HIALS PAPI PAPI 1700' on 115°
Descent angle 3.30°	414	532	591	710	828	946	
Lctr to MAP	6.4	5:29	4:16	3:50	3:12	2:45	

Standard		STRAIGHT-IN LANDING RWY 12		CIRCLE-TO-LAND Southwest of rwy (Northeast of runway under ATC clearance)	
DA(H) 1170' (1073')		ALS out		Max Kts	MDA(H) VIS
A		RVR 1500m		100	1170' (1073') 1500m
B				135	1170' (1073') 1600m
C		CMV 2400m		180	1760' (1663') 2400m
D				205	1760' (1663') 3600m