

LIPK/FRL  
FORLI

JEPPesen  
23 NOV 12 (13-1)

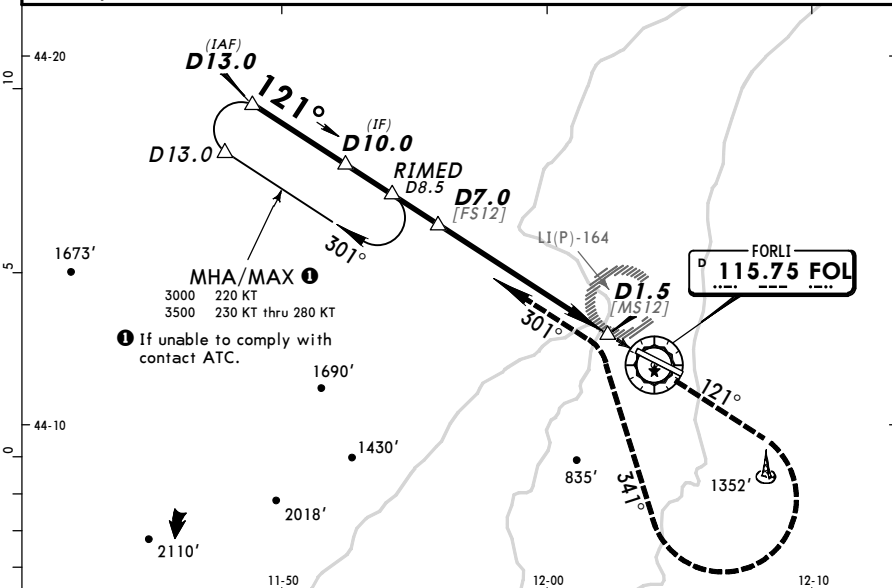
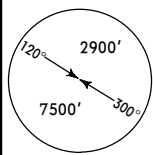
FORLI, ITALY  
VOR Rwy 12

ROMAGNA Approach (R)				*FORLI Tower	
118.15		118.57 122.1		119.75 118.95	
VOR FOL	Final Apch Crs	Minimum Alt D7.0	DA(H)	Apt Elev	98'
<b>115.75</b>	<b>121°</b>	<b>2200'</b> (2102')	<b>750'</b> (652')	<b>RWY 98'</b>	

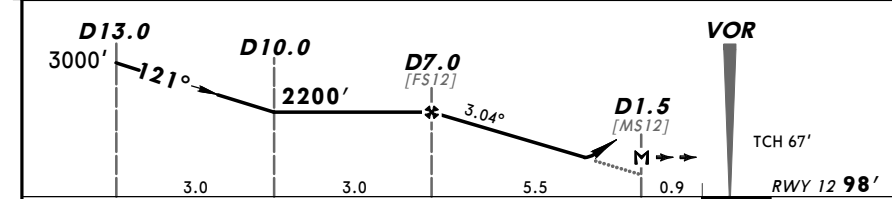
**MISSED APCH:** Climb on track 121° to 3000'. Passing 1700' turn RIGHT (MAX 200 KT) onto track 341° to intercept and follow R-301 to holding. Partially outside controlled airspace.

Alt Set: hPa      Rwy Elev: 4 hPa      Trans level: By ATC      Trans alt: 6000'

**DME required.**



FOL DME	7.0	6.0	5.0	4.0	3.0	2.0	1.0
ALTITUDE	2200'	1880'	1570'	1250'	930'	620'	300'



Gnd speed-Kts	70	90	100	120	140	160	HIALS PAPI PAPI 1700' on 121°	
Descent angle	3.04°	376	484	538	645	753		861
MAP at D1.5								

<b>Standard</b>		STRAIGHT-IN LANDING RWY 12		CIRCLE-TO-LAND Southwest of rwy (Northeast of runway under ATC clearance)	
		DA(H) <b>750'</b> (652')			
		ALS out		Max Kts	MDA(H) / VIS
A	RVR 1500m			100	<b>980'</b> (882') / 1500m
B				135	<b>980'</b> (882') / 1600m
C	CMV 2600m			180	<b>1760'</b> (1662') / 3000m
D		CMV 3000m		205	<b>1760'</b> (1662') / 3600m