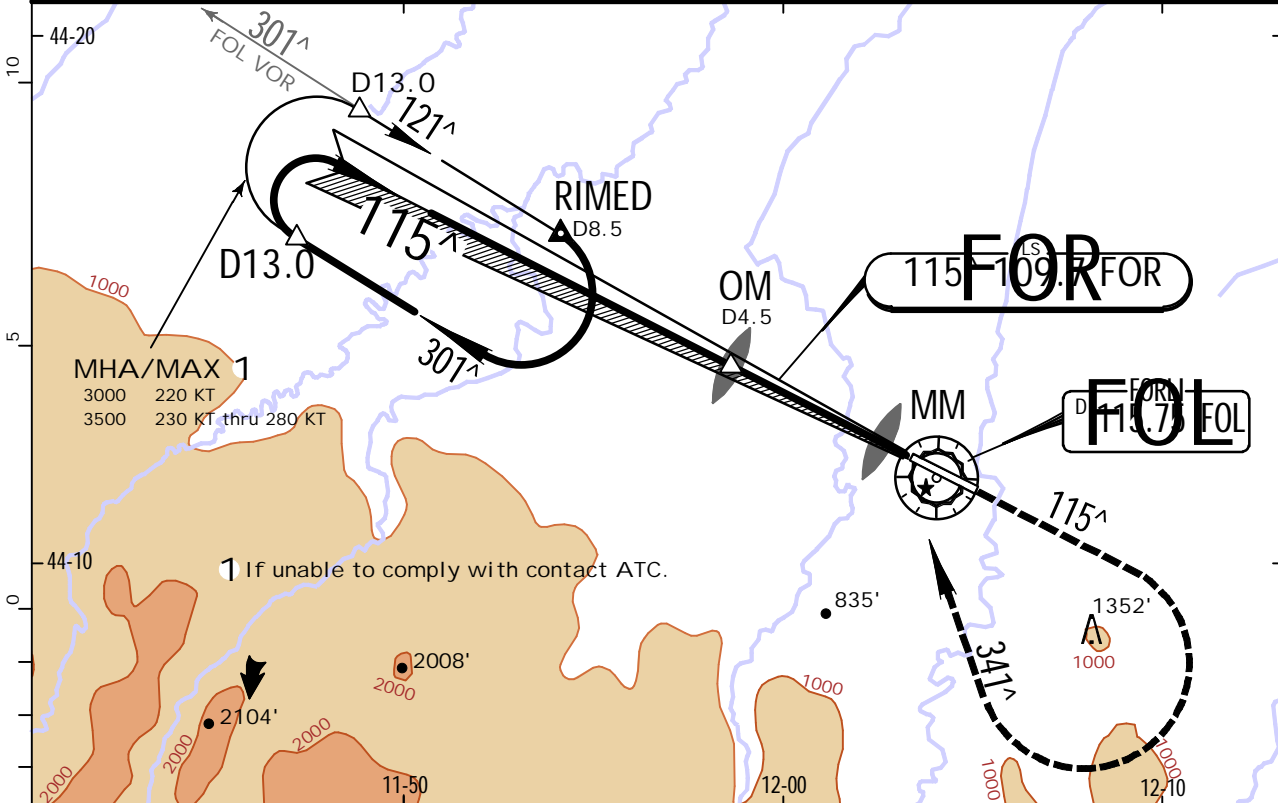


LIPK/FRL  
FORLI

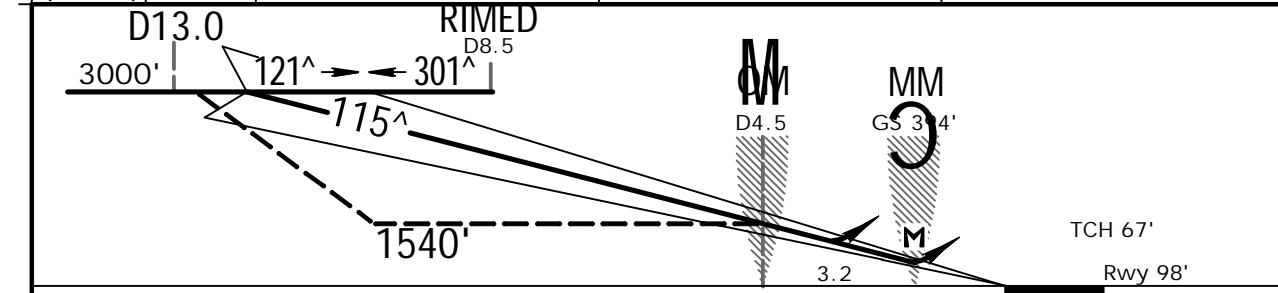
**JEPPESSEN**  
6 OCT 17 (11-2) .Eff.12.Oct.

FORLI, ITALY  
ILS Y Rwy 12

BOLOGNA Approach (R)				FORLI Tower		
118.150		133.775		*119.750		
LOC FOR <b>109.7</b>	Final Apch Crs <b>115^</b>	GS No Alt published	ILS DA(H) Refer to Minimums	Apt Elev 98'	Rwy 98'	
<b>MISSED APCH:</b> Climb on track 115^ to 3000'. Passing 1700' turn RIGHT (MAX 200 KT) onto track 341^ to intercept and follow R-301 to holding.						
Partially outside controlled airspace.						MSA FOL VOR
Alt Set: hPa		Rwy Elev: 4 hPa		Trans level: By ATC		Trans alt: 6000'
1. FOL VOR DME required. 2. Racetrack pattern is restricted to MAX 220 KT.						



LOC (GS out)	FOL DME	4.0	3.0	2.0
	ALTITUDE	1360'	1010'	660'



Gnd speed-Kts	70	90	100	120	140	160	HIALS PAPI PAPI 1700' on 115^
ILS GS or LOC Descent angle	3.30^	409	526	584	701	817	
MAP at MM							

Standard.				STRAIGHT-IN LANDING RWY 12		CIRCLE-TO-LAND	
DA(H) A: 350' (252')		C: 370' (272')		LOC (GS out) CDFA: 690' (592')		Southwest of rwy (Northeast of runway under ATC clearance)	
B: 362' (264')		D: 381' (283')		ALS out		Max Kts	
FULL		ALS out		ALS out		MDA(H) VIS	
A	RVR 800m			RVR 1500m		100	980' (882') 1500m
B		RVR 1300m				135	980' (882') 1600m
C	RVR 900m			RVR 2300m	RVR 2400m	180	1760' (1662') 2400m
D		RVR 1400m				205	1760' (1662') 3600m

PANS OPS