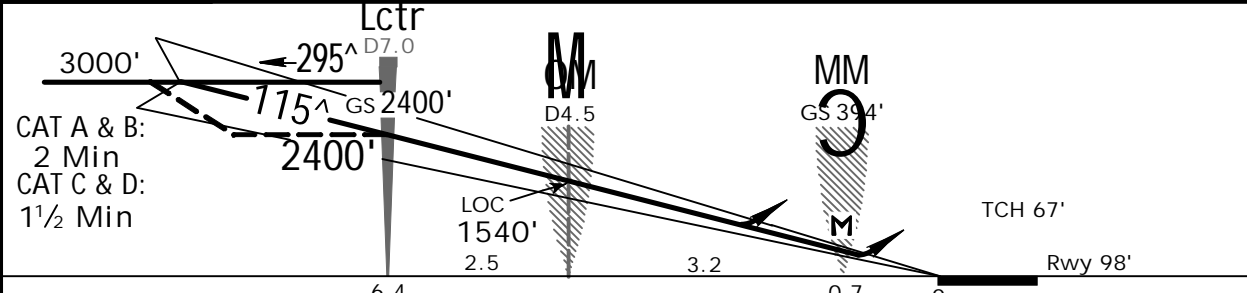
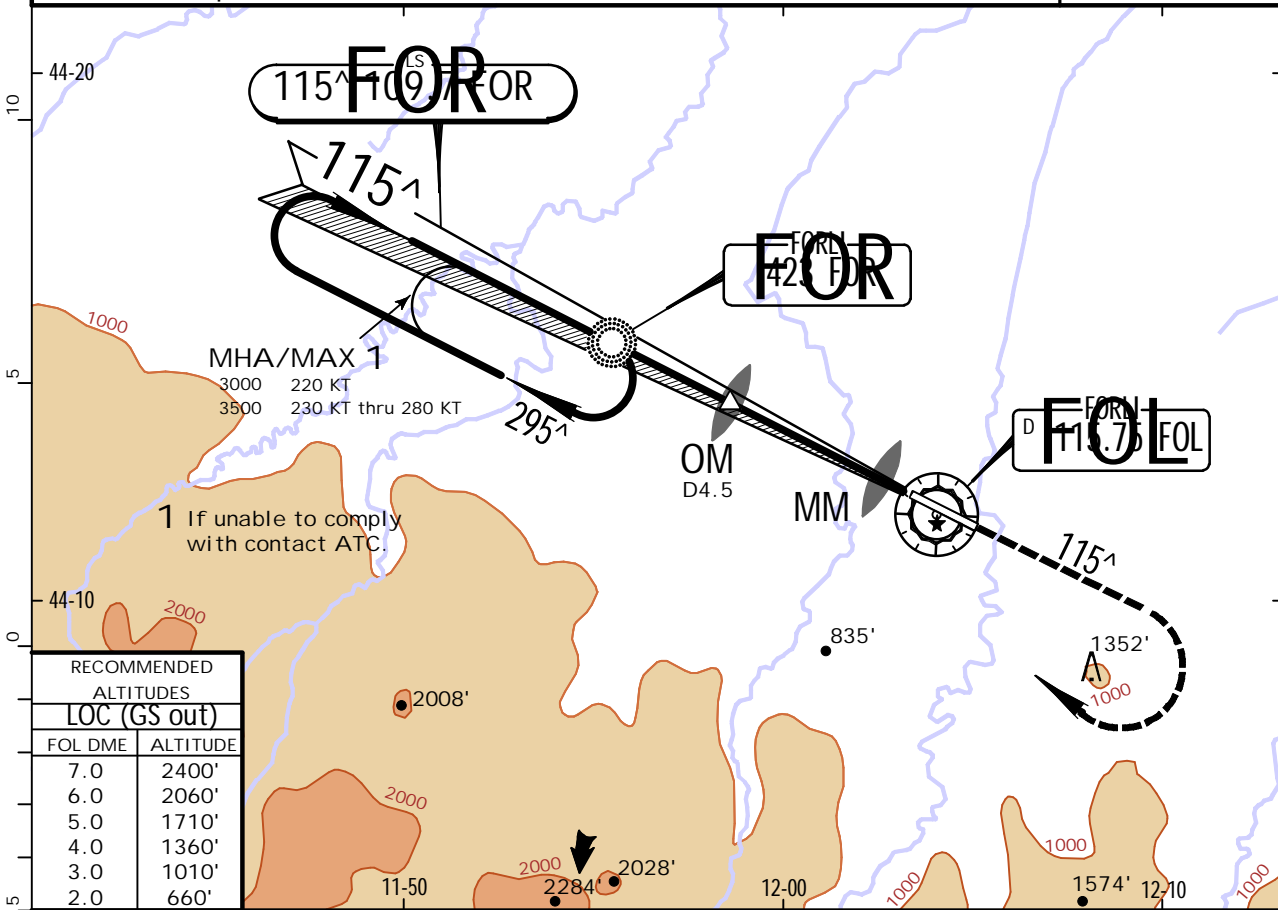


LIPK/FRL
FORLI

JEPPESSEN
6 OCT 17 (11-1) .Eff.12.Oct.

FORLI, ITALY
ILS Z Rwy 12

BOLOGNA Approach (R)				FORLI Tower	
118.150		133.775		* 119.750	
LOC FOR 109.7	Final Apch Crs 115^	GS Lctr 2400' (2302')	ILS DA(H) Refer to Minimums	Apt Elev 98'	Rwy 98'
MISSED APCH: Climb on track 115^ to 3000'. Passing 1700' turn RIGHT (MAX 200 KT) to Lctr and join holding pattern. Partially outside controlled airspace.					<p>MSA FOR Lctr</p>
Alt Set: hPa		Rwy Elev: 4 hPa	Trans level: By ATC	Trans alt: 6000'	
1. FOR Lctr required. 2. Racetrack pattern is restricted to MAX 220 KT.					



Gnd speed-Kts	70	90	100	120	140	160	
ILS GS or LOC Descent angle 3.30^	409	526	584	701	817	934	
MAP at MM							

Standard.		ILS STRAIGHT-IN LANDING RWY 12		LOC (GS out)		CIRCLE-TO-LAND	
DA(H) A: 350' (252')	C: 370' (272')	DA/MDA(H) 690' (592')		Max Kts		Southwest of rwy (Northeast of runway under ATC clearance)	
B: 362' (264')	D: 381' (283')	ALS out		ALS out		100	980' (882') 1500m
A	RVR 800m	RVR 1300m		RVR 1500m		135	980' (882') 1600m
C	RVR 900m	RVR 2300m		RVR 2400m		180	1760' (1662') 2400m
D	RVR 1400m					205	1760' (1662') 3600m

PANS OPS