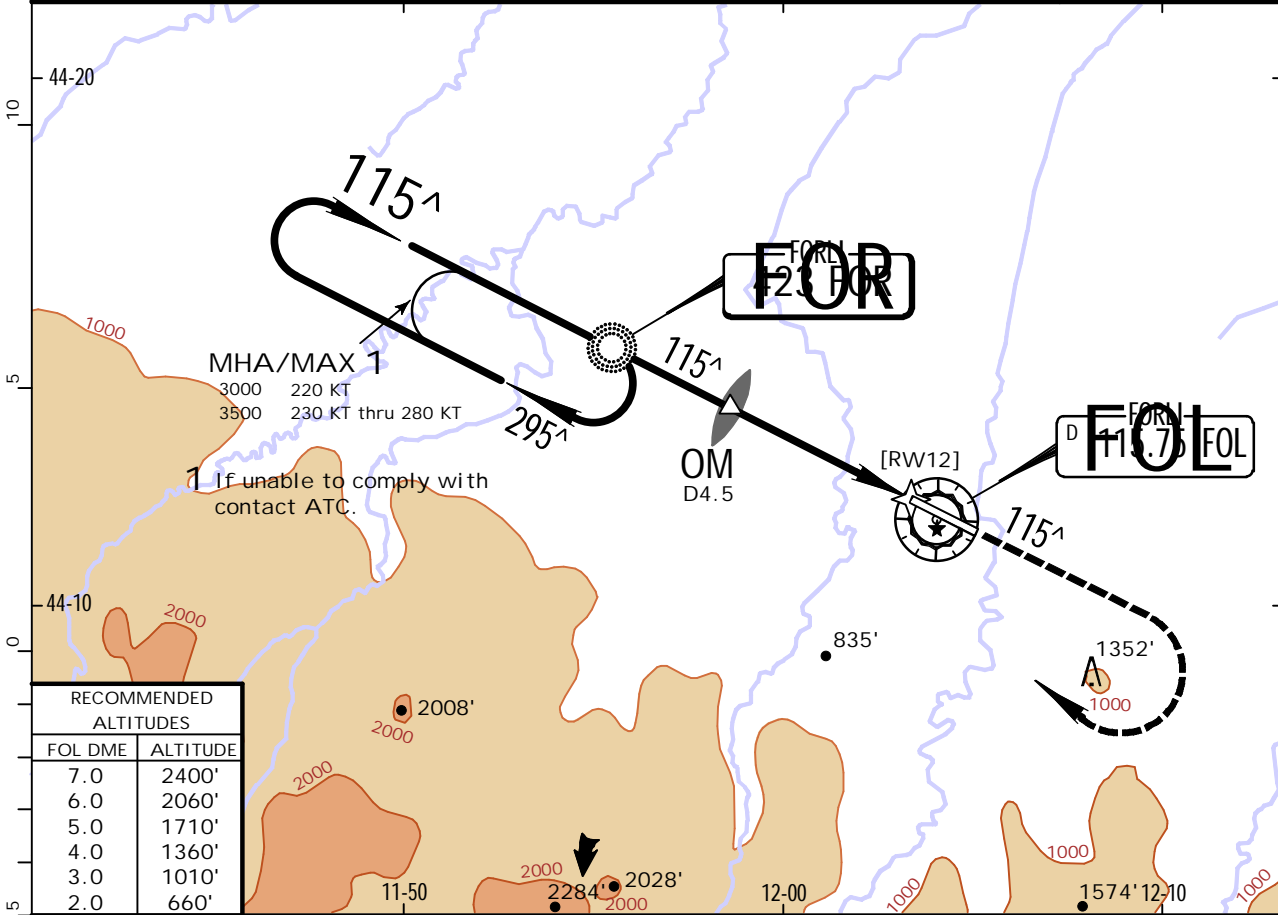


LIPK/FRL
FORLI

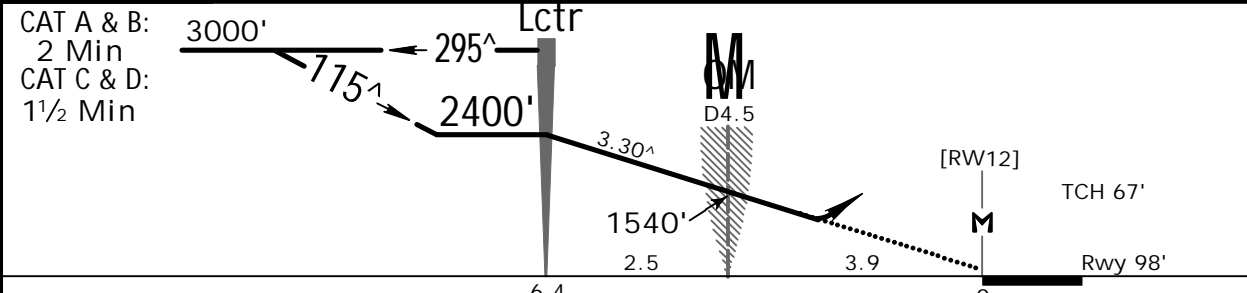
JEPPESEN
11 AUG 17 (16-1) .Eff.17.Aug.

FORLI, ITALY
Lctr Rwy 12

BOLOGNA Approach (R)			FORLI Tower		
118.150		133.775		* 119.750	
Lctr FOR 423	Final Apch Crs 115[^]	Minimum Alt Lctr 2400' (2302')	DA/MDA(H) 1170' (1072')	Apt Elev 98'	Rwy 98'
MISSED APCH: Climb on track 115 [^] to 3000'. Passing 1700' turn RIGHT (MAX 200 KT) to Lctr and join holding pattern. Partially outside controlled airspace.					<p>MSA FOR Lctr</p>
Alt Set: hPa		Rwy Elev: 4 hPa		Trans level: By ATC	
Racetrack pattern is restricted to MAX 220 KT.				Trans alt: 6000'	



RECOMMENDED ALTITUDES	
FOL DME	ALTITUDE
7.0	2400'
6.0	2060'
5.0	1710'
4.0	1360'
3.0	1010'
2.0	660'



Gnd speed-Kts	70	90	100	120	140	160	HIALS PAPI PAPI
Descent angle 3.30 [^]	409	526	584	701	817	934	
Lctr to MAP 6.4	5:29	4:16	3:50	3:12	2:45	2:24	

.Standard.		STRAIGHT-IN LANDING RWY 12		CIRCLE-TO-LAND Southwest of rwy (Northeast of runway under ATC clearance)	
CDFA		DA/MDA(H) 1170' (1072')		ALS out	
A	RVR 1500m	Max Kts	MDA(H)	VIS	
B	RVR 1500m	100	1170' (1072')	1500m	
C	RVR 2400m	135	1170' (1072')	1600m	
D	RVR 2400m	180	1760' (1662')	2400m	
		205	1760' (1662')	3600m	

PANS OPS