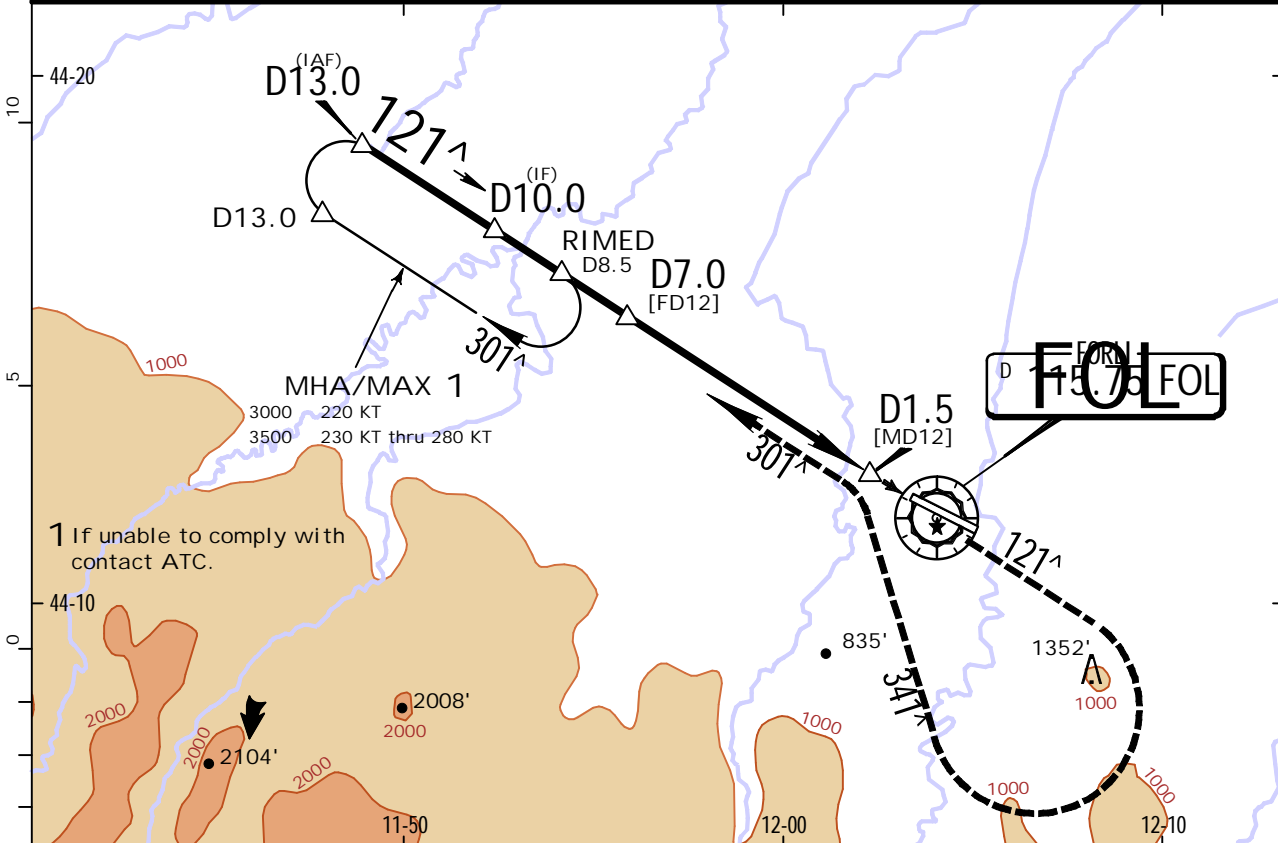
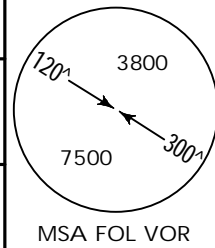


LIPK/FRL
FORLI

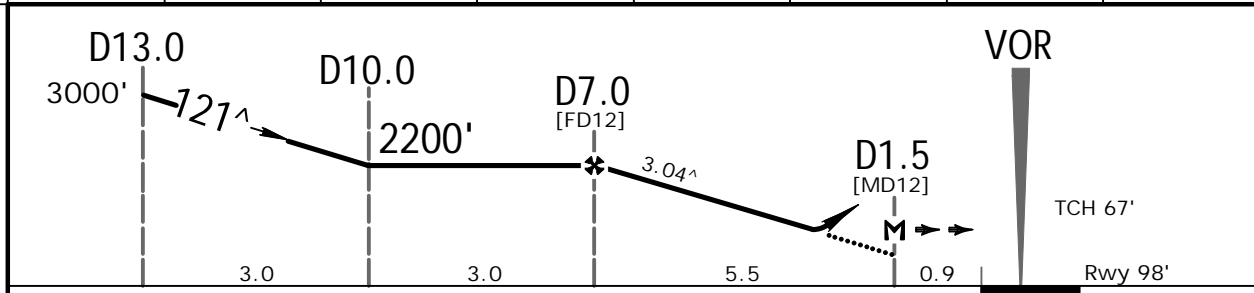
JEPPESSEN
6 OCT 17 (13-1) .Eff.12.Oct.

FORLI, ITALY
VOR Rwy 12

BOLOGNA Approach (R)			FORLI Tower		
118.150		133.775		* 119.750	
VOR FOL 115.75	Final Apch Crs 121^	Minimum Alt D7.0 2200' (2102')	DA/MDA(H) 750' (652')	Apt Elev 98'	Rwy 98'
MISSED APCH: Climb on track 121^ to 3000'. Passing 1700' turn RIGHT (MAX 200 KT) onto track 341^ to intercept and follow R-301 to holding. Partially outside controlled airspace.					
Alt Set: hPa DME required.		Rwy Elev: 4 hPa	Trans level: By ATC		Trans alt: 6000'



FOL DME	7.0	6.0	5.0	4.0	3.0	2.0	1.0
ALTITUDE	2200'	1880'	1570'	1250'	930'	620'	300'



Gnd speed-Kts	70	90	100	120	140	160	HIALS PAPI PAPI 1700' on 121^
Descent angle	3.04^	376	484	538	645	753	
MAP at D1.5							

Standard.		STRAIGHT-IN LANDING RWY 12		CIRCLE-TO-LAND	
		CDFA		Southwest of rwy	
		DA/MDA(H) 750' (652')		(Northeast of runway under ATC clearance)	
		ALS out			
A	RVR 1500m		Max Kts	MDA(H)	VIS
B			100	980' (882')	1500m
C	RVR 2600m	RVR 3000m	135	980' (882')	1600m
D			180	1760' (1662') 1	2400m
			205	1760' (1662')	3600m
1 or higher straight-in minimums.					

PANS OPS