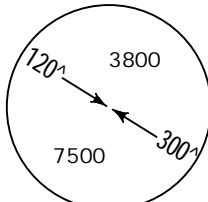
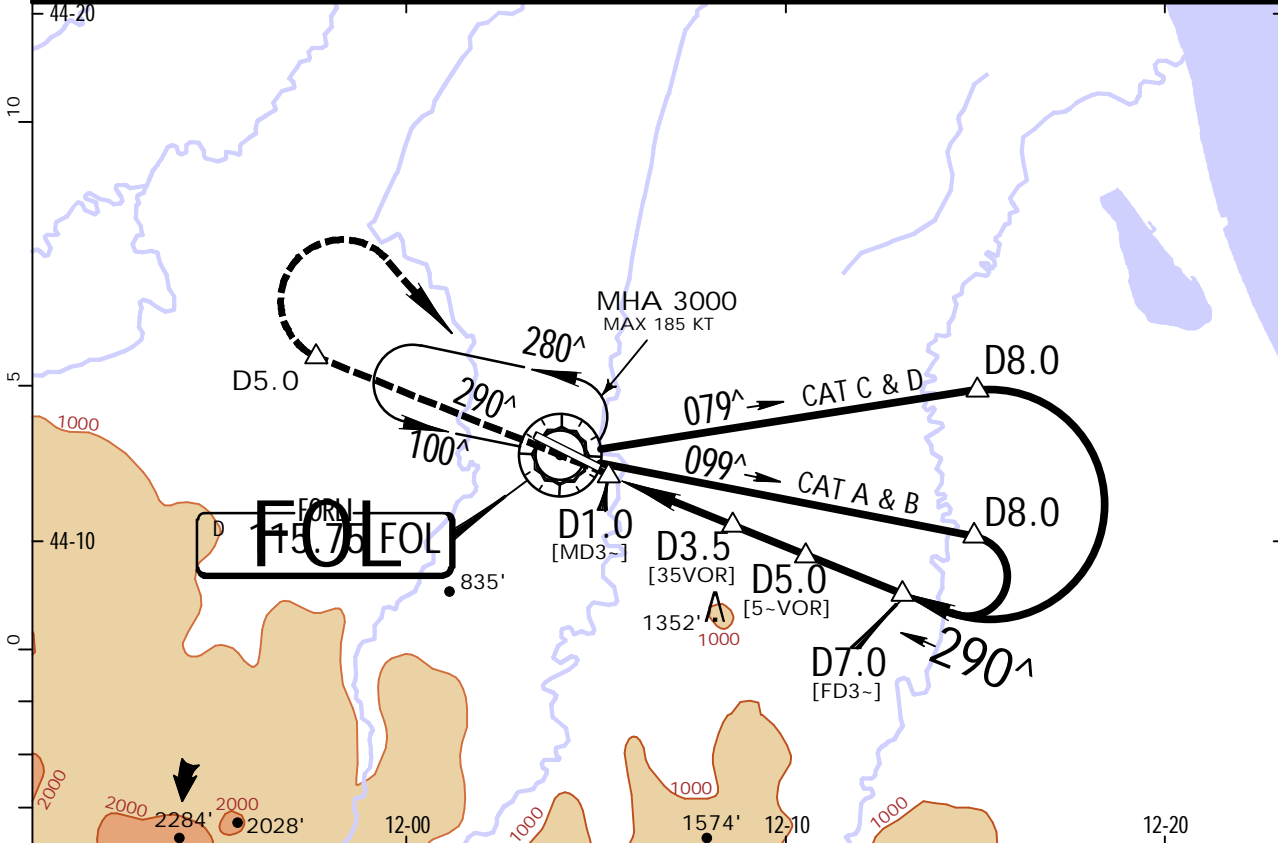


LIPK/FRL  
FORLI

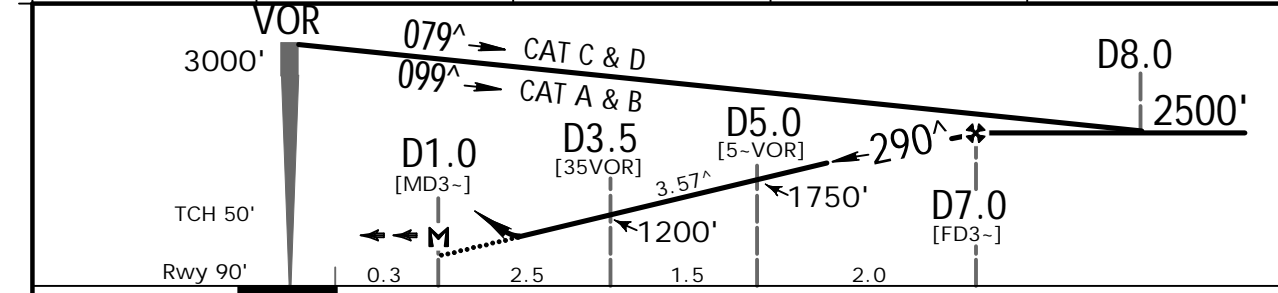
**JEPPESSEN**  
6 OCT 17 (13-2) .Eff.12.Oct.

FORLI, ITALY  
VOR Rwy 30

BOLOGNA Approach (R)			FORLI Tower		
118.150		133.775		* 119.750	
VOR FOL <b>115.75</b>	Final Apch Crs <b>290<sup>^</sup></b>	Minimum Alt D7.0 <b>2500'</b> (2410')	DA/MDA(H) <b>800'</b> (710')	Apt Elev 98'	Rwy 90'
MISSED APCH: Climb on track 290 <sup>^</sup> to 3000'. At D5.0 turn RIGHT (MAX 185 KT) to VOR to join holding.					 <p>MSA FOL VOR</p>
Alt Set: hPa		Rwy Elev: 3 hPa		Trans level: By ATC	
DME required.		Trans alt: 6000'			



FOL DME	3.0	4.0	5.0	6.0
ALTITUDE	1020'	1400'	1770'	2150'



Gnd speed-Kts	70	90	100	120	140	160	PAPI	D5.0 on 290 <sup>^</sup>	
Descent Angle	3.57 <sup>^</sup>	442	569	632	758	885			1011
MAP at D1.0									

PANS OPS	Standard.			STRAIGHT-IN LANDING RWY 30			CIRCLE-TO-LAND 1		
	CDFA						Southwest of rwy (Northeast of runway under ATC clearance)		
	DA/MDA(H) <b>800'</b> (710')						Max Kts	MDA(H)	VIS
	A	RVR 1500m					100	800' (710')	1500m
	B	RVR 1500m					135	800' (710')	1600m
C	RVR 2400m					180	1760' (1670')	2400m	
D	RVR 2400m					205	2100' (2010')	3600m	

1 Circling height based on rwy 30 thresh elev of 90'.