

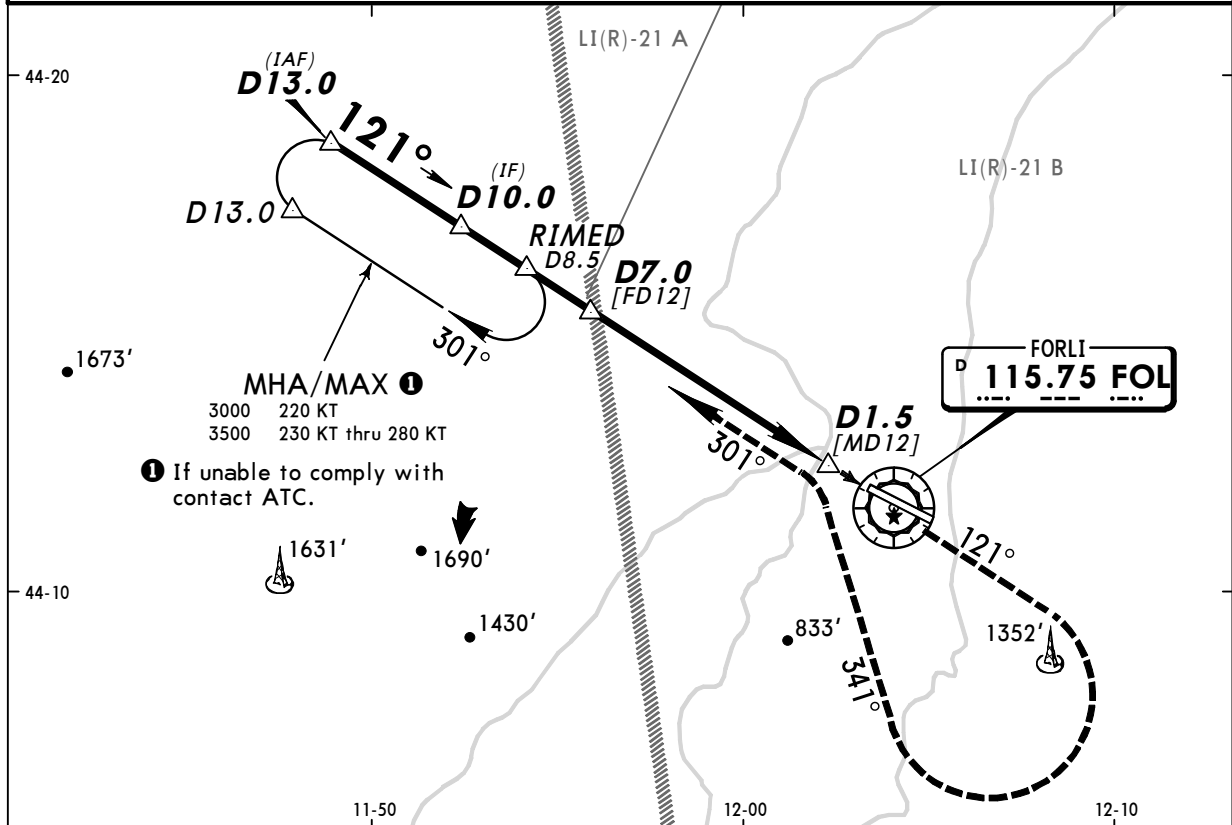
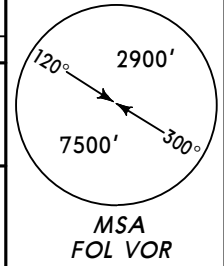
LIPK/FRL
FORLI

JEPPESEN
11 NOV 11 **(13-1)** Eff 17 Nov

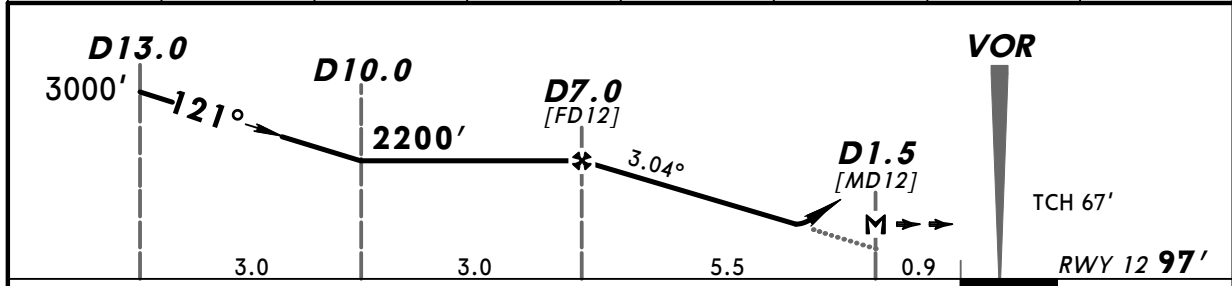
FORLI, ITALY
VOR Rwy 12

BRIEFING STRIP™

ROMAGNA Approach (R) 118.15 118.57 122.1			*FORLI Tower 119.75 118.95	
For UHF see MIL-101 listing				
VOR FOL 115.75	Final Apch Crs 121°	Minimum Alt D7.0 2200' (2103')	DA(H) 750' (653')	Apt Elev 97' RWY 97'
MISSED APCH: Climb on track 121° to 3000'. Passing 1700' turn RIGHT (MAX 200 KT) onto track 341° to intercept and follow R-301 to holding. Partially outside controlled airspace.				
Alt Set: hPa		Rwy Elev: 4 hPa	Trans level: By ATC	
DME required.			Trans alt: 6000'	



FOL DME	7.0	6.0	5.0	4.0	3.0	2.0	1.0
ALTITUDE	2200'	1880'	1570'	1250'	930'	620'	300'



Gnd speed-Kts	70	90	100	120	140	160	
Descent angle	3.04°	376	484	538	645	753	861
MAP at D1.5							

Standard	STRAIGHT-IN LANDING RWY 12		CIRCLE-TO-LAND Southwest of rwy (Northeast of runway under ATC clearance)	
	DA(H) 750' (653')			
	ALS out		Max Kts	
A	RVR 1500m		100	MDA(H) 980' (883') VIS 1500m
B			135	980' (883') 1600m
C	CMV 2600m	CMV 3000m	180	1760' (1663') 3000m
D			205	1760' (1663') 3600m

PANS OPS 4