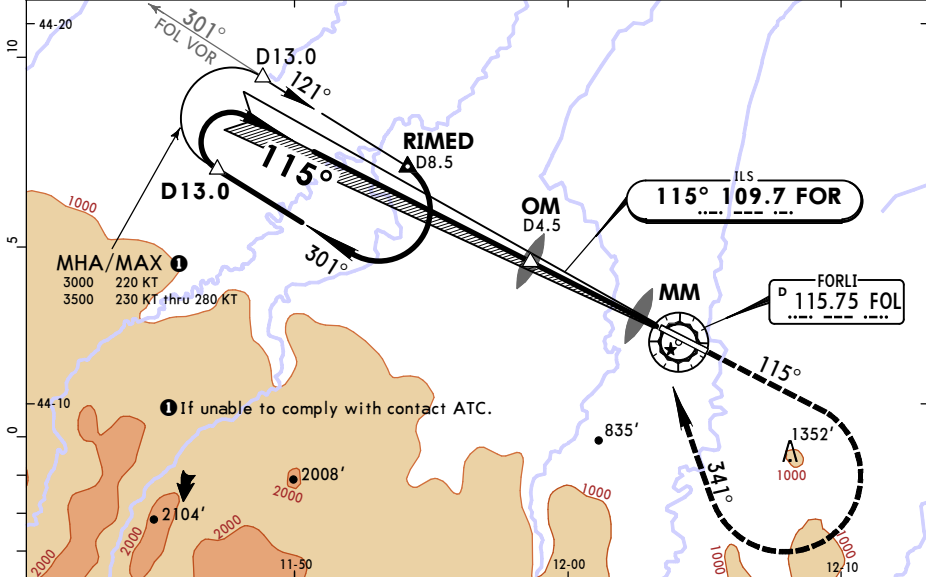


LIPK/FRL
FORLI

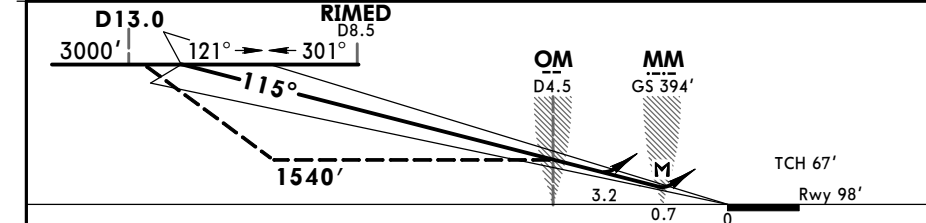
JEPPesen
6 JUL 18 **(1-1)** Eff 19 Jul

FORLI, ITALY
ILS Rwy 12

BOLOGNA Approach (R)				FORLI Tower	
118.150		133.775		*119.750	
LOC FOR	Final Apch Crs	GS No Alt published	ILS DA(H) Refer to Minimums	Apt Elev 98'	Rwy 98'
109.7	115°				
MISSED APCH: Climb on track 115° to 3000'. Passing 1700' turn RIGHT (MAX 200 KT) onto track 341° to intercept and follow R-301 to holding.					
Partially outside controlled airspace.					
Alt Set: hPa		Rwy Elev: 4 hPa		Trans level: By ATC	
1. FOL VOR DME required.		2. Racetrack pattern is restricted to MAX 220 KT.		Trans alt: 6000'	



LOC	FOL DME	4.0	3.0	2.0
(GS out)	ALTITUDE	1360'	1010'	660'



Gnd speed-Kts	70	90	100	120	140	160	HIALS PAPI PAPI 1700' on 115°	
ILS GS or LOC Descent angle	3.30°	409	526	584	701	817		934
MAP at MM								

Standard				STRAIGHT-IN LANDING RWY 12		CIRCLE-TO-LAND	
ILS DA(H) A: 350' (252') C: 370' (272')		LOC (GS out) CDFA DA/MDA(H) 690' (592')		Southwest of rwy (Northeast of runway under ATC clearance)		Max Kts	
FULL		ALS out		RVR 1500m		MDA(H) _____ VIS _____	
A						100	980' (882') 1500m
B		RVR 1300m				135	980' (882') 1600m
C	RVR 1000m			RVR 2300m	RVR 2400m	180	1760' (1662') 2400m
D		RVR 1400m				205	1760' (1662') 3600m