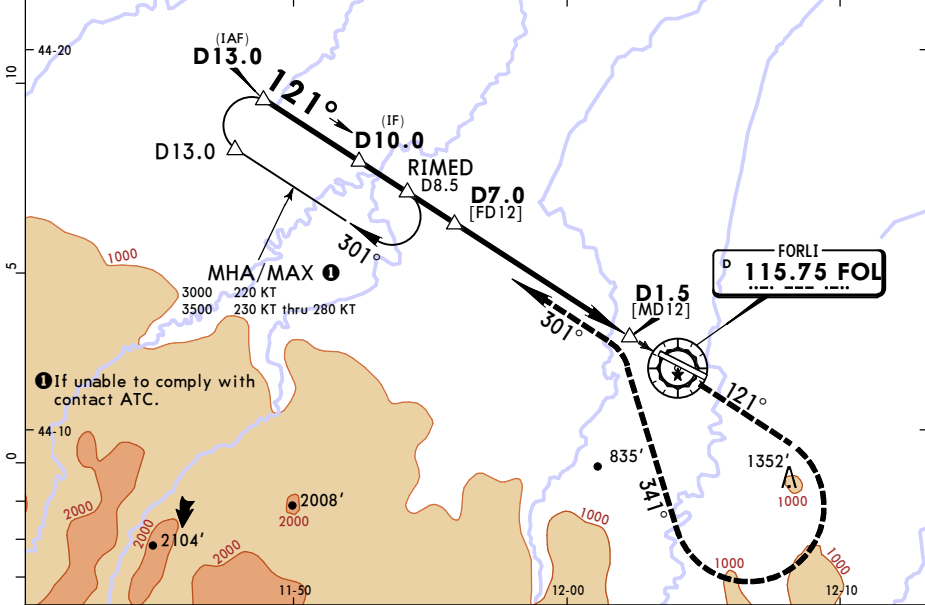
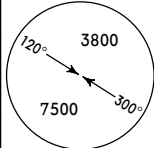


**LIPK/RFL**  
**FORLI**

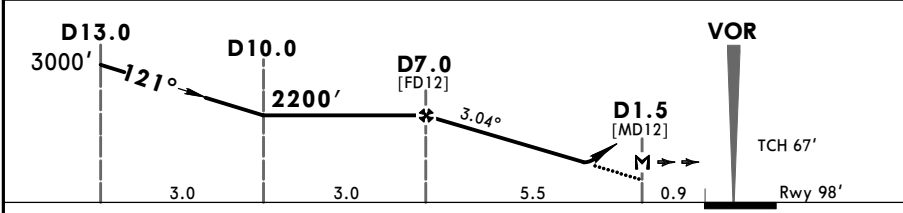
**JEPPESEN**  
17 NOV 17 **(13-1)**

**FORLI, ITALY**  
**VOR Rwy 12**

BOLOGNA Approach (R)			FORLI Tower		
118.150		133.775		*119.750	
VOR FOL	Final Apch Crs	Minimum Alt D7.0	DA/MDA(H)	Apt Elev	98'
<b>115.75</b>	<b>121°</b>	<b>2200'</b> (2102')	<b>750'</b> (652')	Rwy	98'
<b>MISSED APCH:</b> Climb on track 121° to 3000'. Passing 1700' turn <b>RIGHT (MAX 200 KT)</b> onto track 341° to intercept and follow R-301 to holding. Partially outside controlled airspace.					
Alt Set: hPa		Rwy Elev: 4 hPa		Trans level: By ATC	
<b>DME required.</b>			Trans alt: 6000'		



FOL DME	7.0	6.0	5.0	4.0	3.0	2.0	1.0
ALTITUDE	2200'	1880'	1570'	1250'	930'	620'	300'



Gnd speed-Kts	70	90	100	120	140	160	HIALS PAPI PAPI 1700' on 121°
Descent angle	3.04°	376	484	538	645	753	
MAP at D1.5							

<b>PANS OPS</b>	<b>Standard</b>		<b>STRAIGHT-IN LANDING RWY 12</b>		<b>CIRCLE-TO-LAND</b>	
	CDFA				Southwest of rwy (Northeast of runway under ATC clearance)	
	DA/MDA(H) <b>750'</b> (652')				Max Kts	MDA(H) _____ VIS _____
	ALS out				100	<b>980'</b> (882') 1500m
	A	RVR 1500m			135	<b>980'</b> (882') 1600m
B				180	<b>1760'</b> (1662') 2400m	
C	RVR 2600m		RVR 3000m		205	<b>1760'</b> (1662') 3600m
D						

**1** or higher straight-in minimums.  
CHANGES: None. © JEPPESEN, 2007, 2017. ALL RIGHTS RESERVED.