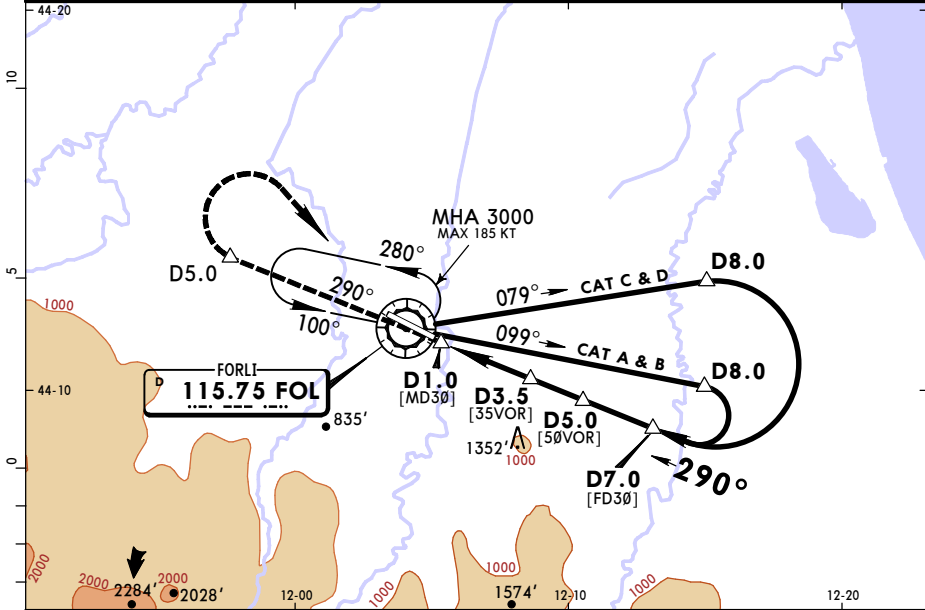


**LIPK/FRL**  
**FORLI**

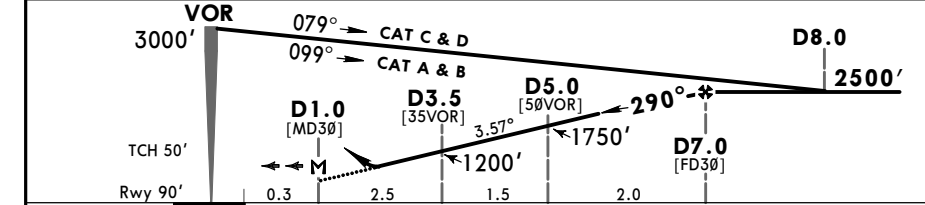
**JEPPESEN**  
17 NOV 17 **(13-2)**

**FORLI, ITALY**  
**VOR Rwy 30**

BRIEFING STRIP™	BOLOGNA Approach (R)			FORLI Tower		
	118.150	133.775	*119.750			
	VOR FOL <b>115.75</b>	Final Apch Crs <b>290°</b>	Minimum Alt D7.0 <b>2500'</b> (2410')	DA/MDA(H) <b>800'</b> (710')	Apt Elev 98'	Rwy 90'
<b>MISSED APCH:</b> Climb on track 290° to 3000'. At D5.0 turn RIGHT (MAX 185 KT) to VOR to join holding.						<p>MFA FOL VOR</p>
Alt Set: hPa		Rwy Elev: 3 hPa		Trans level: By ATC		Trans alt: 6000'
<b>DME required.</b>						



FOL DME	3.0	4.0	5.0	6.0
ALTITUDE	1000'	1370'	1750'	2110'



Gnd speed-Kts	70	90	100	120	140	160	PAPI	D5.0 on 290°
Descent Angle 3.57°	442	569	632	758	885	1011		
MAP at D1.0								

PANS OPS	<b>Standard</b> STRAIGHT-IN LANDING RWY 30				<b>CIRCLE-TO-LAND</b>				
	CDFA								
	DA/MDA(H) <b>800'</b> (710')								
	A	RVR 1500m				Max Kts	MDA(H)	VIS	
	B	RVR 1500m				100	800' (710')	1500m	
C	RVR 2400m				135	800' (710')	1600m		
D	RVR 2400m				180	1760' (1670')	2400m		
					205	2100' (2010')	3600m		

1 Circling height based on rwy 30 thresh elev of 90'.  
CHANGES: Recommended altitudes. © JEPPESEN, 2011, 2017. ALL RIGHTS RESERVED.